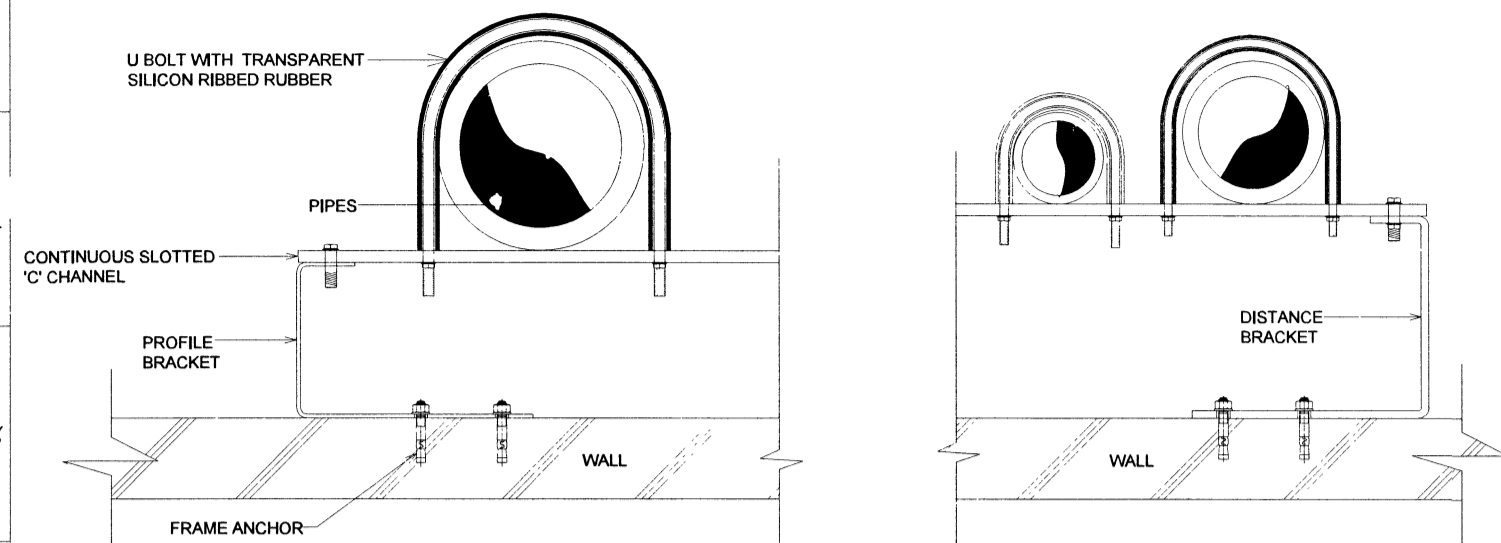
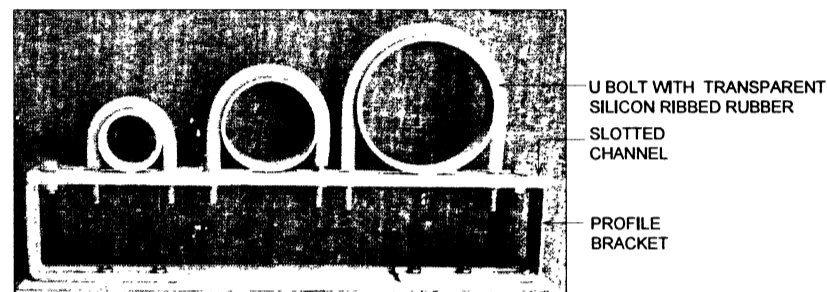


**1 DETAILS OF PROFILE BRACKET & DISTANCE BRACKET**

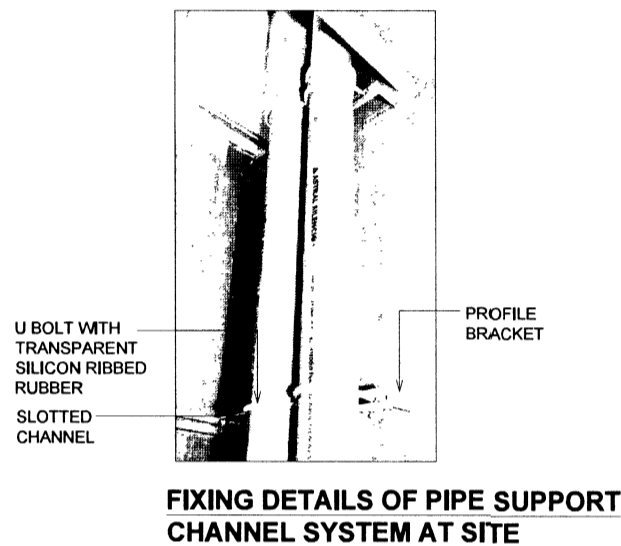


**PLAN OF PROFILE BRACKET (A)**  
(SUPPORT SYSTEM FOR PIPES)

**PLAN DISTANCE BRACKET**  
(SUPPORT SYSTEM FOR HEAVY PIPES)

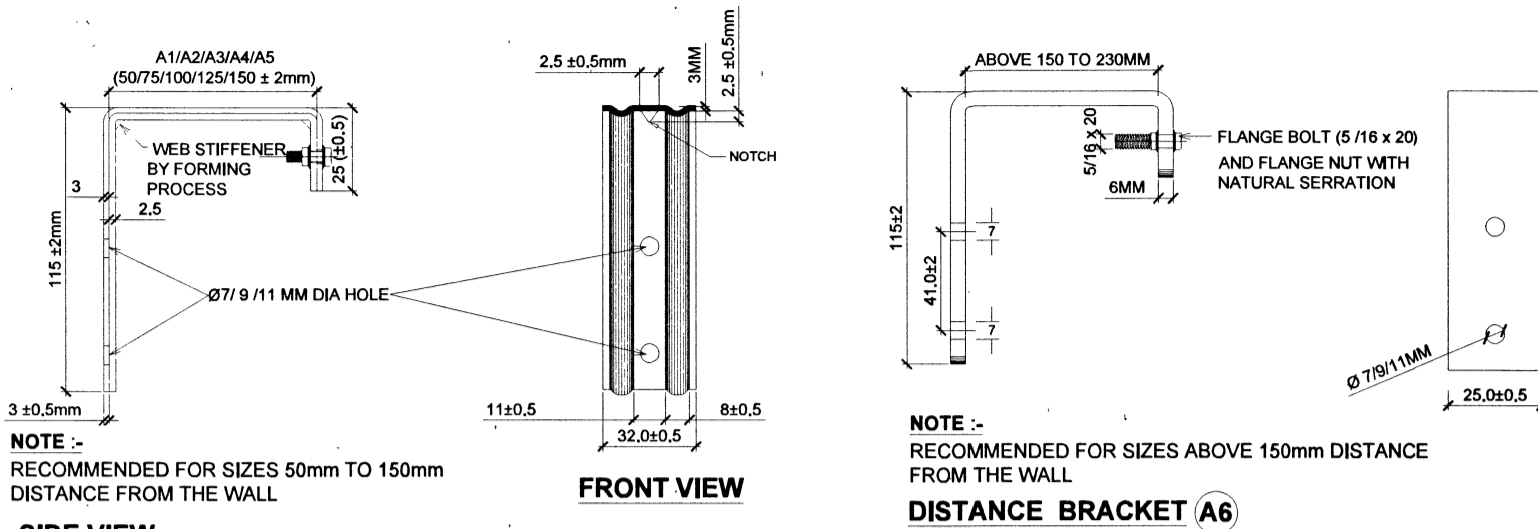


**FOR MULTIPLE PIPES (SOIL PIPE, WASTE PIPE, WATER SUPPLY PIPE & RAIN WATER PIPE)**  
**PROFILE BRACKET + CONTINUOUS SLOTTED 'C' CHANNEL + U BOLT SYSTEM**



**FIXING DETAILS OF PIPE SUPPORT CHANNEL SYSTEM AT SITE**

**2 DETAILS OF PROFILE BRACKET & DISTANCE BRACKET**



**NOTE :-**  
RECOMMENDED FOR SIZES 50mm TO 150mm DISTANCE FROM THE WALL

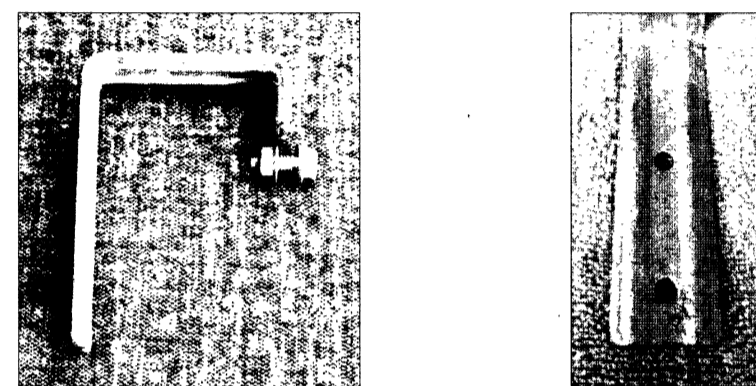
**SIDE VIEW**

**PROFILE BRACKET (A1 TO A5)**

**NOTES :-**

**PROFILE BRACKET**

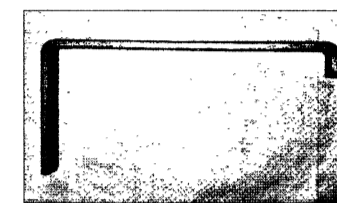
PROFILE BRACKET OF LOW CARBON DEEP DRAWN HOT ROLLED GAUGE CORRECTED (HRGC) CARBON STEEL (IS 1079 DD) WITH RIBS & NOTCH, HOT DIP GALVANISING (IS 2629) + ZN - AL (ZINC ALUMINIUM) FLAKE COATED INCLUDING SS304 FLANGE BOLT 5/16 X 3/4 (AF 13MM) AS PER DIN 6921 AND SS304 FLANGE NUT BSW 5/16 X 18 X 8 X 13 AS PER DIN 6923 SHALL BE AS SHOWN IN DRG. ALSO AVAILABLE IN STAINLESS STEEL (SS) MATERIAL.



**PROFILE BRACKET**

**NOTE :-**  
RECOMMENDED FOR SIZES ABOVE 150mm DISTANCE FROM THE WALL

**DISTANCE BRACKET (A6)**



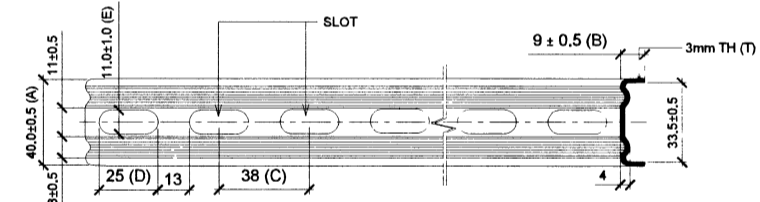
**DISTANCE BRACKET**

**NOTES :-**

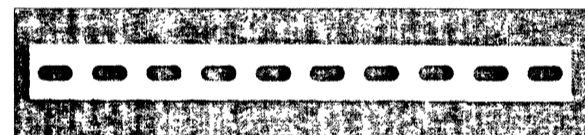
**DISTANCE BRACKET**

DISTANCE BRACKET OF LOW CARBON STEEL WITH HOT DIP GALVANISING (IS 2629) + ZN - AL (ZINC ALUMINIUM) FLAKE COATED SHALL BE AS SHOWN IN DRAWING.

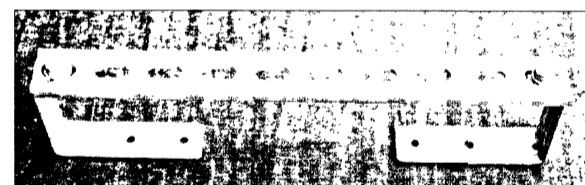
**3 DETAILS OF SLOTTED 'C' CHANNEL STEEL**



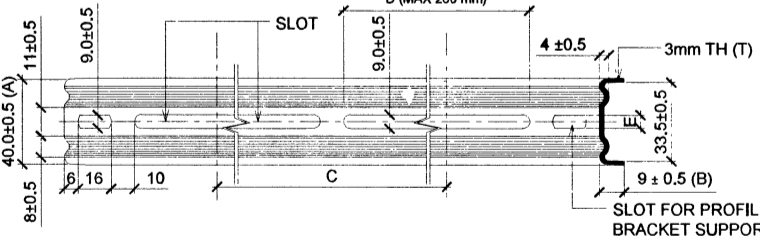
**NOTES :-**  
LOW CARBON STEEL SLOTTED 'C' CHANNEL (B2) SHALL BE OF LOW CARBON STEEL (CONFIRMING TO IS 1079 DD) WITH RIBS ON BOTH SIDES AND HOT ROLL GAUGE CORRECTED (HRGC) STEEL MATERIAL OF 3MM THICKNESS, WITH HOT DIP GALVANISING (CONFIRMING TO IS 2629) AND ZN - AL (ZINC ALUMINIUM) FLAKE COATING OVER IT.



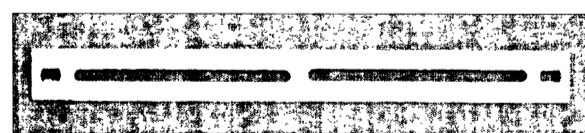
**RIBBED LOW CARBON STEEL SLOTTED 'C' CHANNEL (B2)**



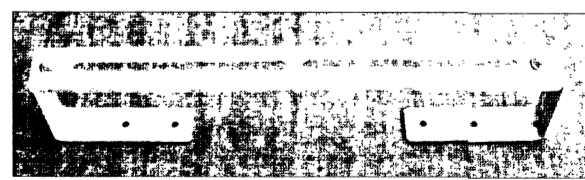
**FIXING DETAILS OF RIBBED LOW CARBON STEEL SLOTTED 'C' CHANNEL WITH PROFILE BRACKET**



**NOTES :-**  
LOW CARBON STEEL CONTINUOUS SLOTTED 'C' CHANNEL (B3) LOW CARBON STEEL CONTINUOUS SLOTTED 'C' CHANNEL WITH RIBS AVAILABLE IN LOW CARBON DEEP DRAWN HOT ROLL GAUGE CORRECTED OIL PICKLED (HROP D) STEEL MATERIAL (IS 1079) WITH HOT DIP GALVANISING (IS 2629) + ZN - AL (ZINC ALUMINIUM) FLAKE COATED THICKNESS 3MM SHALL BE USED AS SPECIFIED (AS SHOWN IN DRAWING). THIS CHANNEL IS AVAILABLE IN DIFFERENT LENGTH SIZES AS PER REQUIREMENT IN THE PROJECT. ALSO AVAILABLE IN STAINLESS STEEL (SS) MATERIAL.

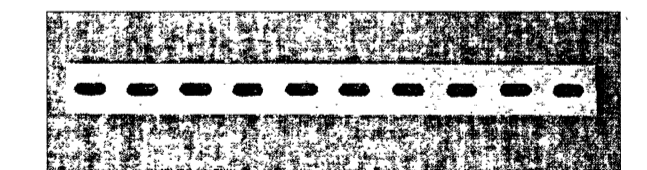
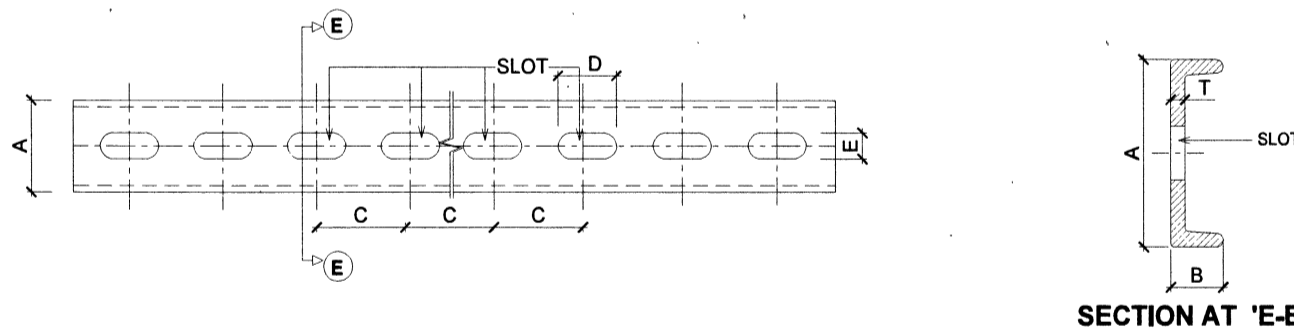


**RIBBED LOW CARBON STEEL CONTINUOUS SLOTTED 'C' CHANNEL (B3)**



**FIXING DETAILS OF RIBBED LOW CARBON STEEL CONTINUOUS SLOTTED 'C' CHANNEL WITH PROFILE BRACKET**

**4 DETAILS OF FRP SLOTTED 'C' CHANNEL**



**FRP (FIBRE REINFORCED POLYMER) PULTRUDED SLOTTED 'C' CHANNEL (B1)**

PRODUCT AND DIMENSIONS	T	A	B	C	D x E
FRP SLOTTED CHANNEL (B1)	3.5 mm ± 0.5	38 mm	11 mm	40 mm	25 x 11
LOW CARBON STEEL (B2) (SLOTTED CHANNEL)	3 mm	40 mm	9 mm	38 mm	25 x 11
LOW CARBON STEEL (B3) (CONTINUOUS SLOTTED)	3 mm	40 mm	9 mm	C	D x 9

**FRP PULTRUDED (B1) / LOW CARBON STEEL (B2) SLOTTED 'C' CHANNEL AND LOW CARBON CONTINUOUS SLOTTED 'C' CHANNEL (B3)**

**NOTE :-** 1. FOR CONTINUOUS SLOTTED CHANNEL 'C' & 'D' SHALL VARY WITH RESPECT TO DIFFERENT SIZES.

SER.NO	DESCRIPTION	TYPE
1	PROFILE BRACKET	A1/A2/A3/A4/A5
2	DISTANCE BRACKET	A6
3	SLOTTED 'C' CHANNEL	B1 / B2 / B3
4	U BOLT	C1 TO C10

**NOTES :-**

- CONTRACTOR TO CHECK & VERIFY ALL DIMENSIONS BEFORE EXECUTION OF THE WORK.
- ALL DIMENSIONS ARE GIVEN IN MILLIMETERS UNLESS OTHERWISE SPECIFIED.
- FIGURED DIMENSIONS SHALL BE FOLLOWED.
- PROVIDING SUPPORT TO DRAINAGE AND WATER SUPPLY PIPES AT A SPECIFIED DISTANCE FROM THE WALL FOR VERTICAL AND HORIZONTAL LINES FIXED AT INTERVALS OF EVERY METER, WHICH ARE MADE OF DEEP DRAW LOW CARBON HOT ROLL GAUGE CORRECTED (HRGC) STEEL (MATERIAL GRADE : IS 1079 DD) OF SHAMI OR EQUIVALENT.
- FOR COASTAL REGION WHICH HAPPENS TO BE HIGHLY CORROSIVE ENVIRONMENT, IT IS RECOMMENDED THAT PRODUCTS MADE OF HIGH QUALITY STAINLESS STEEL MATERIAL TO BE USED.

**GENERAL NOTES:-**(FOR VERTICAL SUPPORT CLAMPING)

1. THE CLAMPS AND FIXTURES TO BE USED FOR PIPE SUPPORTING PLUMBING SOLUTIONS SHALL BE CONFIRMED WITH OUTER DIA (OD) OF PIPES AND FOR ALL THE FIXING DETAILS THIS DRAWING SHALL BE REFERRED.

2. PROFILE BRACKET, DISTANCE BRACKET & LOW CARBON STEEL SLOTTED 'C' CHANNEL COATING OF HOT DIP GALVANISING (IS 2629) + ZN - AL FLAKE COATING (65-70 MICRON) PROVIDING 2000 HRS SALT SPRAY TEST (SST) (TEST METHOD: ASTM B-117-2019).

3. THE COATING OF ZN - AL (ZINC ALUMINIUM FLAKE) ON ALL OTHER CLAMPS WOULD BE OF 15-18 MICRON PROVIDING 600 HRS SALT SPRAY TEST (SST) (ASTM B-117-2019).

4. (a) PREPARE A SAMPLE PLUMBING CLAMPING SYSTEM WITH THE TYPES OF 'U' BOLTS OF SPECIFIC PIPE OD (OUTER DIAMETER) SIZE TO BE FIXED ON THE FRP SLOTTED 'C' CHANNEL (B1) LOW CARBON STEEL (IS 1079 DD) SLOTTED 'C' CHANNEL (B2) OR LOW CARBON STEEL (IS 1079 DD) CONTINUOUS SLOTTED 'C' CHANNEL (B3)

(b) FOR THE NECESSARY PIPES RUNNING ON THE 'C' CHANNEL (B1/B2), ENSURE ONE SLOT WHICH IS KEPT FREE ON BOTH ENDS FOR FIXING OF PROFILE BRACKET FOR LENGTH UPTO 2.5 FEET.

(c) FOR FRP SLOTTED CHANNEL (B1) LENGTH ABOVE 2.5 FEET, AN ADDITIONAL PROFILE BRACKET SUPPORT NEEDS TO BE PROVIDED FOR EVERY ONE FEET INCREASE IN CHANNEL LENGTH.

(d) FOR LOW CARBON STEEL (IS 1079 DD) SLOTTED 'C' CHANNEL (B2) OR LOW CARBON STEEL (IS 1079 DD) CONTINUOUS SLOTTED 'C' CHANNEL (B3) LENGTH ABOVE 2.5 FEET, AN ADDITIONAL PROFILE BRACKET SUPPORT NEEDS TO BE PROVIDED FOR EVERY 1.5 FEET INCREASE IN CHANNEL LENGTH.

(e) THE REQUIRED LENGTH OF THE 'C' CHANNEL (B1 OR B2) FOR SPECIFIC AREA SHALL BE DETERMINED AND CUT ACCORDINGLY.

(f) B3 CHANNEL WILL BE PROVIDED WITH PRECUT SIZE AND TREATED AS PER PROJECT REQUIREMENT.

5. PROFILE BRACKET SHALL BE FIXED ON THE HORIZONTAL RCC MEMBER WHEREVER (FLOOR SLAB / SUNK SLAB / HORIZONTAL BEAM) AVAILABLE IN THE DUCT WITH STUD ANCHOR FASTENERS. IN BETWEEN SUBSEQUENT FLOOR SLABS THE PIPES SHALL BE SUPPORTED BY PROFILE BRACKET SYSTEM AT EVERY ONE METER DISTANCE ON EXTERNAL WALL. THE TYPE OF PROFILE BRACKET AND ITS FIXING USED SHALL BE SUCH THAT THE VERTICAL ALIGNMENT OF PIPES ARE MAINTAINED.

6. THE PROFILE BRACKETS SHALL BE FIXED AT BOTH ENDS USING FRAME ANCHOR (10 x 80) ON BRICK / SOLID BLOCK WALL AND STUD ANCHOR ( M10 x 90 MM LENGTH ) ON RCC MEMBER AS SHOWN IN DRAWINGS.

7. THE ANCHOR FASTENER WHICH IS BEING USED FOR FIXING OF CLAMPS SHALL BE OF (HILTI, BOSCH OR FISCHER) AND SHALL BE FIXED IN THE BOTTOM OF RCC SLAB/BEAM .

8. FOR G+1 STOREY BUILDING SLOTTED 'C' CHANNEL OF B1/B2 TYPE SHALL BE USED.

9. FOR G+2 STOREY BUILDING & ABOVE SLOTTED 'C' CHANNEL B3 TYPE SHALL BE USED.

No.	DESCRIPTION	Date	SIGN
<b>REVISION</b>			

**FACTORY MADE PIPE SUPPORTING SYSTEM**

**DETAILS OF PROFILE BRACKET, DISTANCE BRACKET STEEL SLOTTED 'C' CHANNEL AND FRP SLOTTED 'C' CHANNEL FOR VERTICAL PIPE SUPPORTING SYSTEM**

DATE	23-10-2023	SHT NO
DRN	SUB SANTOSH	1
TCD		4
CKD		
SCALE	<b>DRG NO:- CEPZ/2023/TD/ 03</b>	

**CHIEF ENGINEER**  
**PUNE ZONE**

*(Signature)*  
AAD (ARCH)

*(Signature)*  
DY DIR (ARCH)

*(Signature)*  
DIR (ARCH)  
FOR CHIEF ENGINEER